

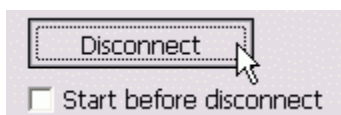
HydroDAS Firmware update procedure

Requirements:

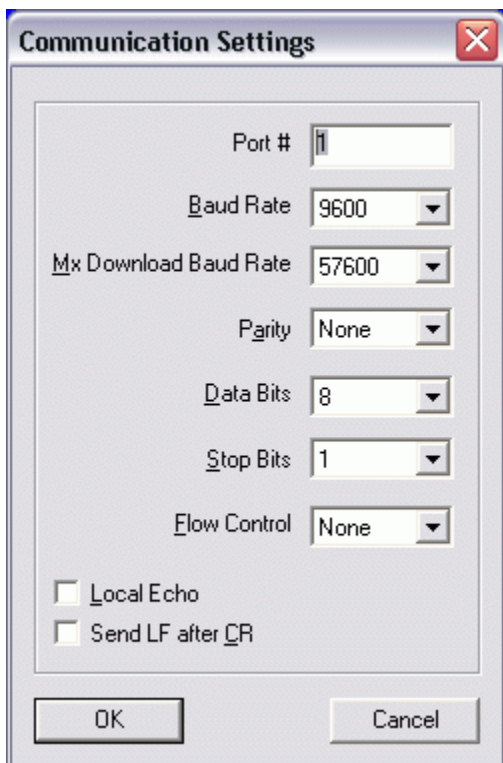
- [HydroDAS Console](#), [HydroDAS Firmware](#), and [Motocross](#) installed on your computer
- Familiarity with the basic operation of the HydroDAS and Console software. For details, see the [System Manual](#).
- One COM port available on your computer
- 12V power source for the HydroDAS
- Power cable (supplied with HydroDAS)
- Host port connector (supplied with HydroDAS)

Procedure:

- If not already installed, install [HydroDAS Console](#), [HydroDAS Firmware](#), and [Motocross](#) on your computer
- Connect the power source to the HydroDAS
- Connect the HydroDAS console port to the COM port on your computer
- Turn on the 12V power source
- Start HydroDAS Console
- After HydroDAS Console has established a connection, uncheck the **Start before disconnect** option, and click **Disconnect**:



- Open Motocross
- Select Communication Settings from the File menu, and enter the following settings (except the port number, which may not be 1 on your computer).

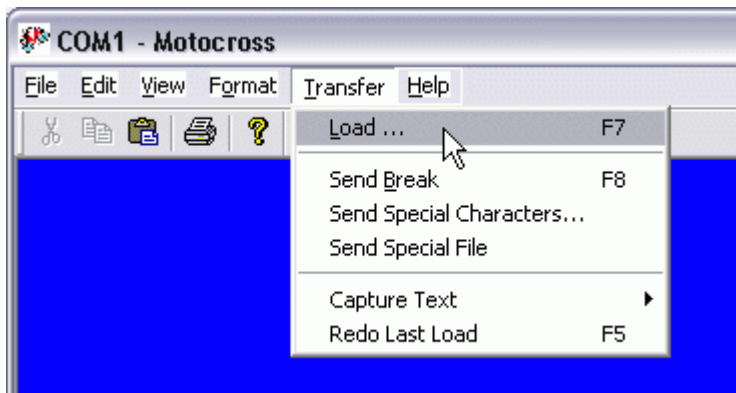


- Click in the Motocross window and type EXIT followed by the enter key. You should see approximately (the number may be different):

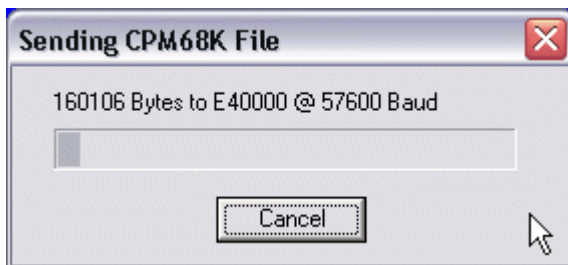
```
-----
Persistor CF11M   SN 51863   PicoDOS V2.28r4   PBM V2.27
(C) 1998-2004 Persistor Instruments Inc. - www.persistor.com
-----
```

```
c:\>
```

- On the **Transfer** menu, select **Load...**



- Select the file MDASXXX.APP where XXX is the version number (for example, 320), and click **Open**. You should see a progress window like the following, for about 30 seconds.



- When the transfer is complete, you should see approximately (the numbers may be different)

```
C:\>
###MX Load: CRC E40000 E6FFFF = 1BD2E9AF
G
```

- Press the enter key. You should then see

```
-->"??" @ E40000
```

- Additional messages may follow, depending on the exact settings of the HydroDAS.
- Exit Motocross (select Exit from the File menu).
- Return to the HydroDAS Console window.
- Click Connect. The HydroDAS should now respond normally to the controls in the Console.